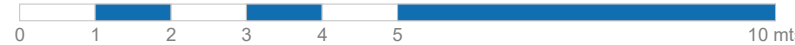
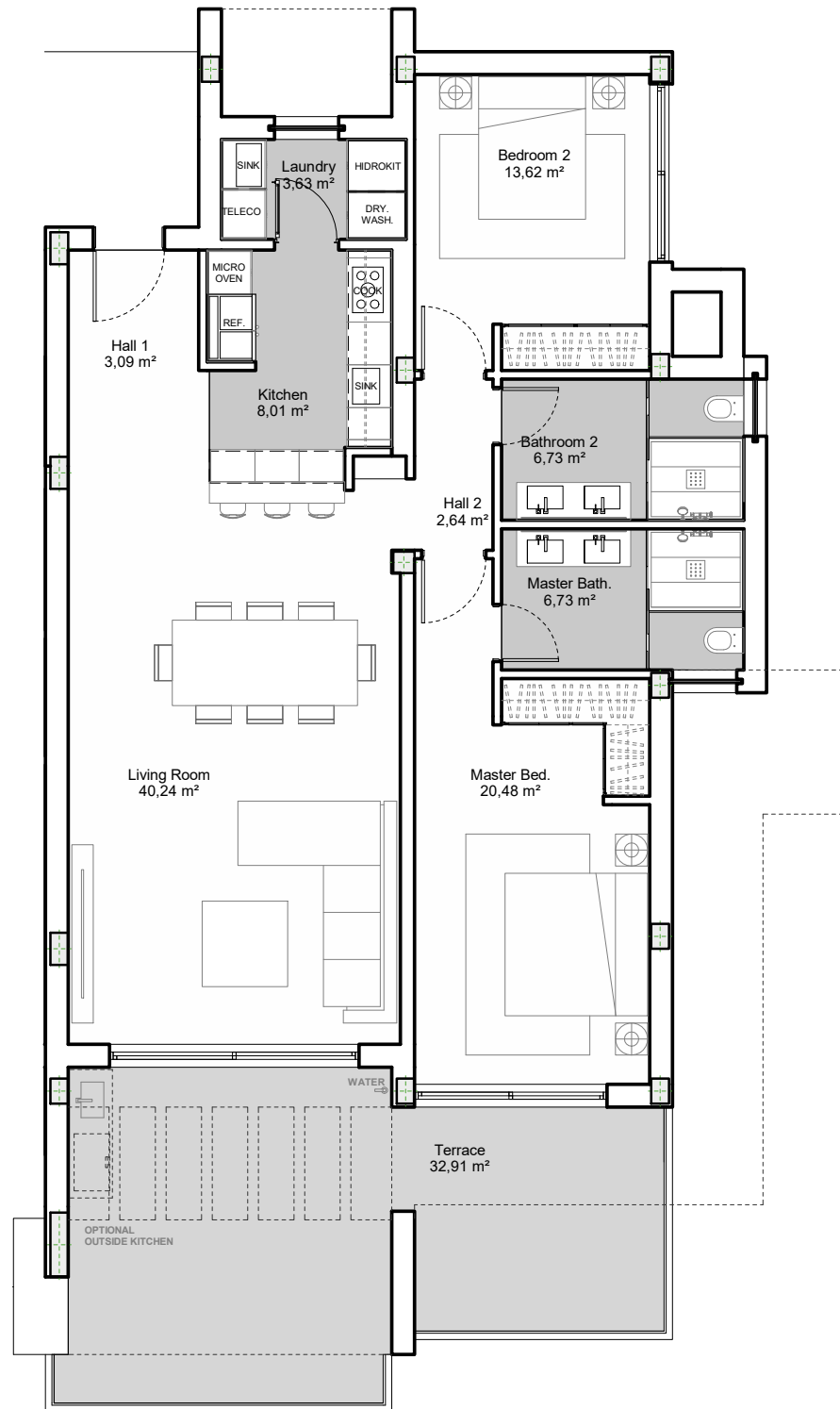


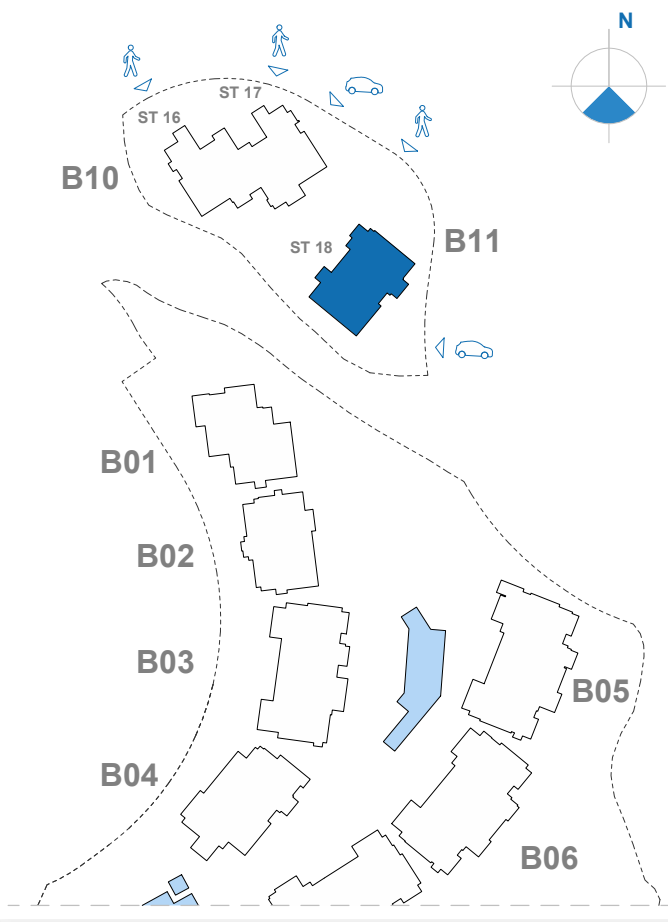
# APARTMENT 18.1.1

## 2 BEDROOMS

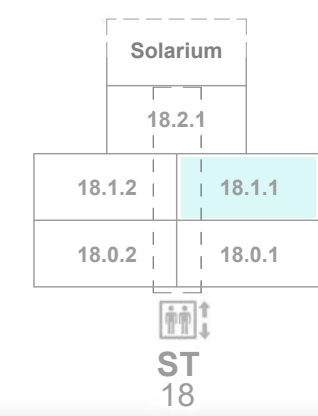


E: 1/100

### Site Plan



### Block 11 Stairway 18



### Apartment 18.1.1 2 BEDROOMS

Indoor Usable Area	105,19 m <sup>2</sup>
Terrace Usable Area	32,91 m <sup>2</sup>
<b>Total Usable Area</b>	<b>138,10 m<sup>2</sup></b>
Indoor Constructed Area	124,64 m <sup>2</sup>
Terrace Constructed Area	36,32 m <sup>2</sup>
<b>Total Constructed Area</b>	<b>160,97 m<sup>2</sup></b>
<b>C.A.W.E.U.</b>	

PALO ALTO OJÉN - MARBELLA



124,64 m<sup>2</sup>



36,32 m<sup>2</sup>



This document is for information only. The areas and measurements shown are approximate and may be modified for technical reasons and/or administrative issues. All furniture shown is for illustrative purposes.  
 \*APT: Apartment // SOL: Solarium // BAS: Basement // Apartment Code: Stairway - Floor - Apartment // C.A.W.E.U.: Common Area With Exclusive Use