



# OASIS 22

by MAREIN

## OPTION BASEMENT

### BASEMENT

MULTIPURPOSE ROOM 62,50m<sup>2</sup>

**USEFULL SURFACE 62,50m<sup>2</sup>**

**BUILT SURFACE 73,85m<sup>2</sup>**

## OPTION 3 BEDROOM

### FIRST FLOOR

HALL 1,95m<sup>2</sup>  
 LIVING/DINING ROOM 50,95m<sup>2</sup>  
 KITCHEN 9,30m<sup>2</sup>  
 BATHROOM 2,25m<sup>2</sup>

**USEFULL SURFACE 64,45m<sup>2</sup>**

**BUILT SURFACE 78,50m<sup>2</sup>**

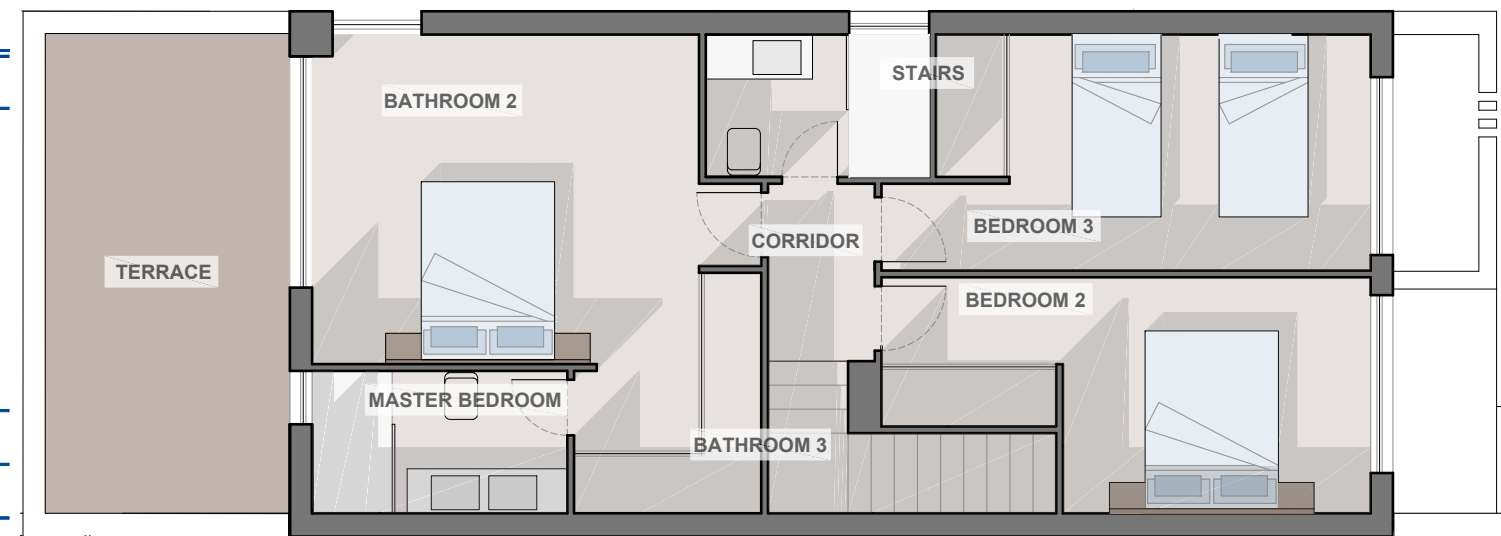
### FIRST FLOOR

STAIRS 3,60m<sup>2</sup>  
 CORRIDOR 2,40m<sup>2</sup>  
 MASTER BEDROOM 21,05m<sup>2</sup>  
 BEDROOM 2 12,85m<sup>2</sup>  
 BEDROOM 3 13,30m<sup>2</sup>  
 BATHROOM 2 4,55m<sup>2</sup>  
 BATHROOM 3 4,00m<sup>2</sup>

**USEFULL SURFACE 61,75m<sup>2</sup>**

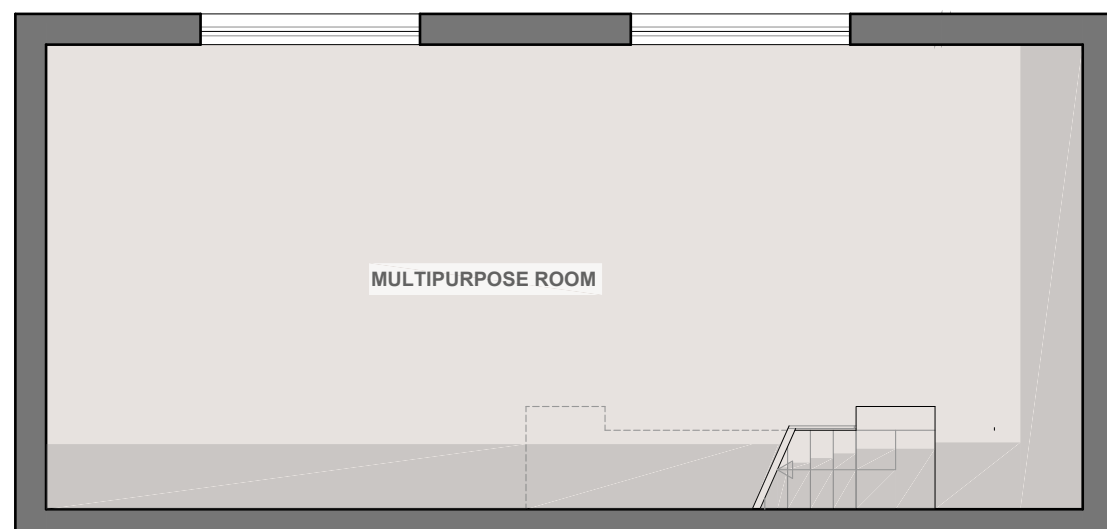
**BUILT SURFACE 88,95m<sup>2</sup>**

## OPTION 3 BEDROOM

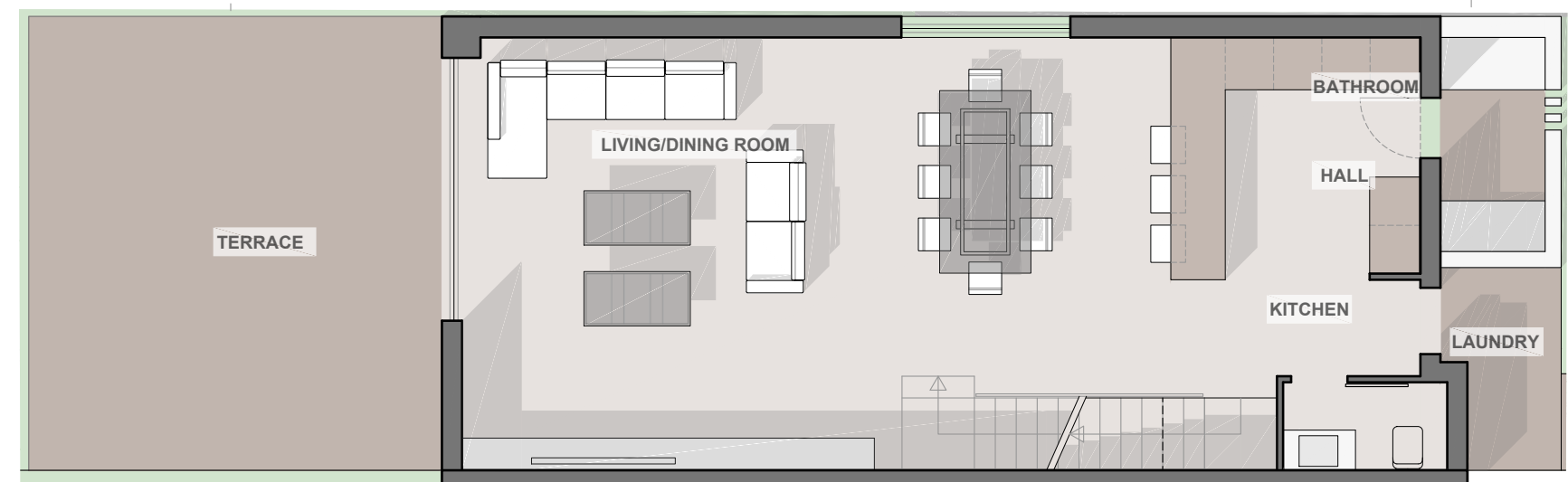


**FIRST FLOOR**

## OPTION BASEMENT



**BASEMENT**



**GROUND FLOOR**