

OASIS 22

by MAREIN

OPTION BASEMENT

BASEMENT

MULTIPURPOSE ROOM 62,50m²

USEFULL SURFACE 62,50m²

BUILT SURFACE 73,85m²

OPTION 3 BEDROOM

FIRST FLOOR

HALL 1,95m²
 LIVING/DINING ROOM 50,95m²
 KITCHEN 9,30m²
 BATHROOM 2,25m²

USEFULL SURFACE 64,45m²

BUILT SURFACE 78,50m²

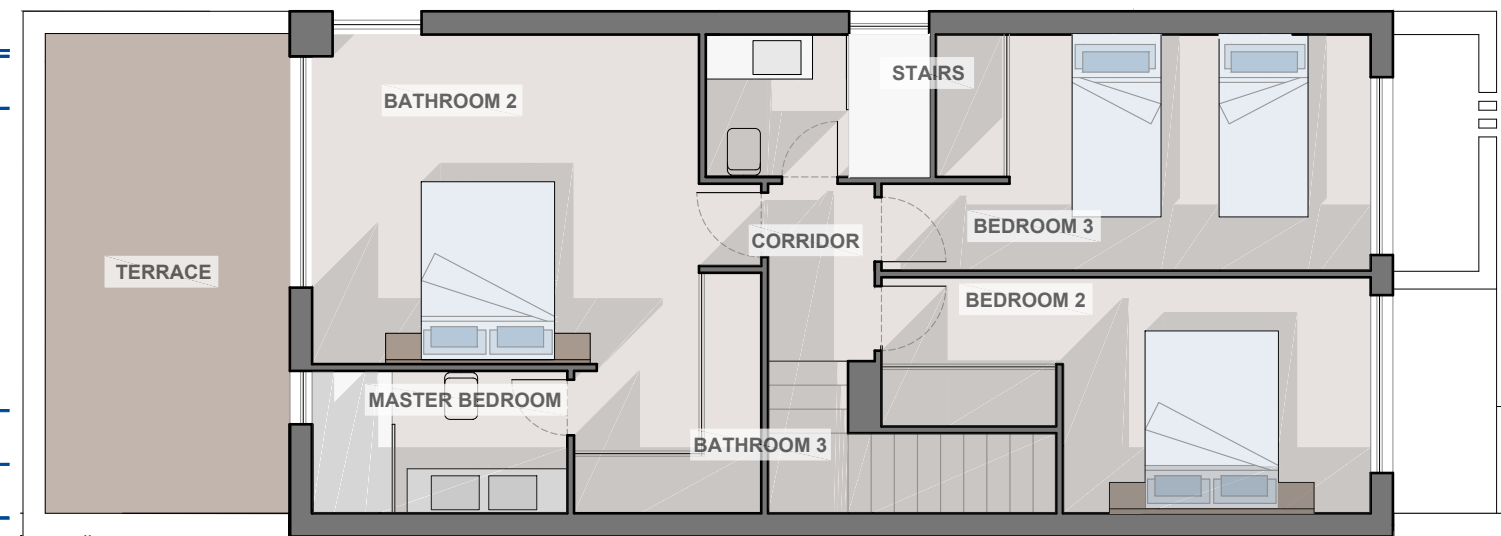
FIRST FLOOR

STAIRS 3,60m²
 CORRIDOR 2,40m²
 MASTER BEDROOM 21,05m²
 BEDROOM 2 12,85m²
 BEDROOM 3 13,30m²
 BATHROOM 2 4,55m²
 BATHROOM 3 4,00m²

USEFULL SURFACE 61,75m²

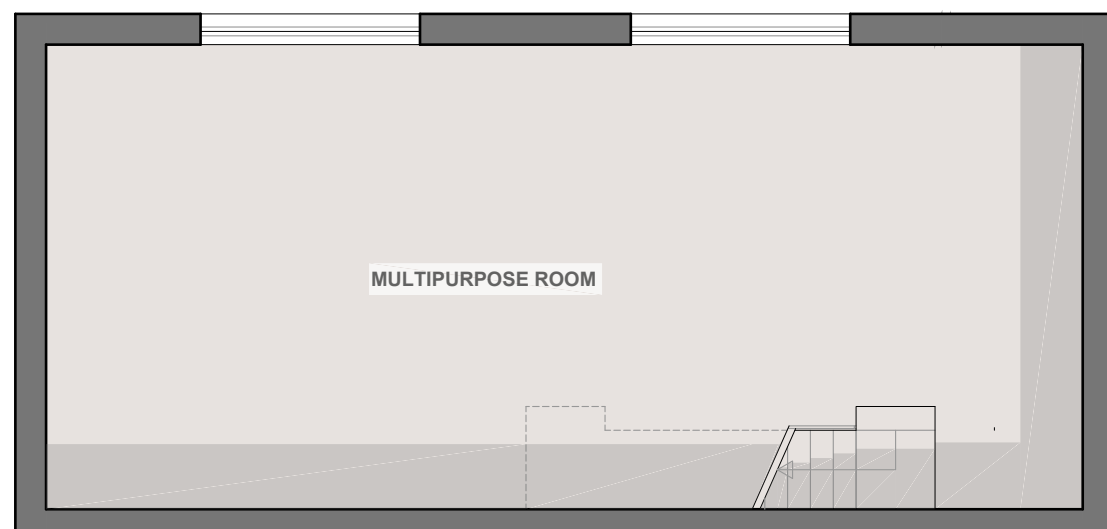
BUILT SURFACE 88,95m²

OPTION 3 BEDROOM

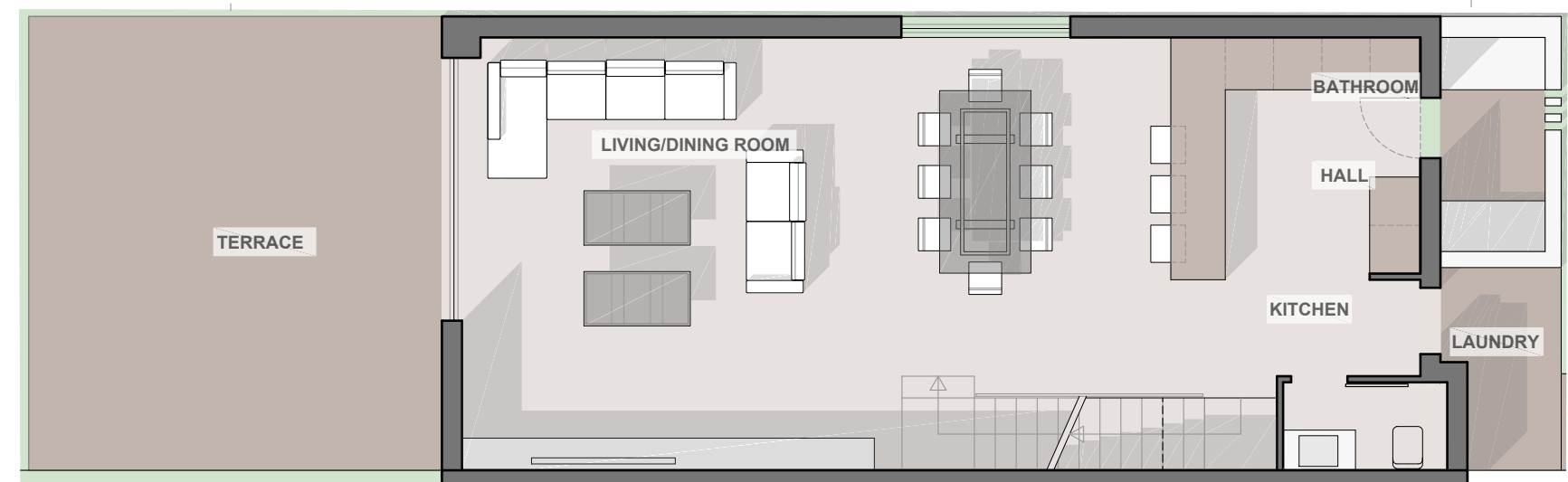


FIRST FLOOR

OPTION BASEMENT



BASEMENT



GROUND FLOOR

NOTA: Estos planos son orientativos, pudiendo sufrir modificaciones durante el desarrollo del proyecto, a juicio de la dirección técnica y de los organismos competentes. El mobiliario es figurativo no vinculante.

NOTE: These plans are for guidance only, and may change during the project, according to the technical management. Figurative furniture is not binding.