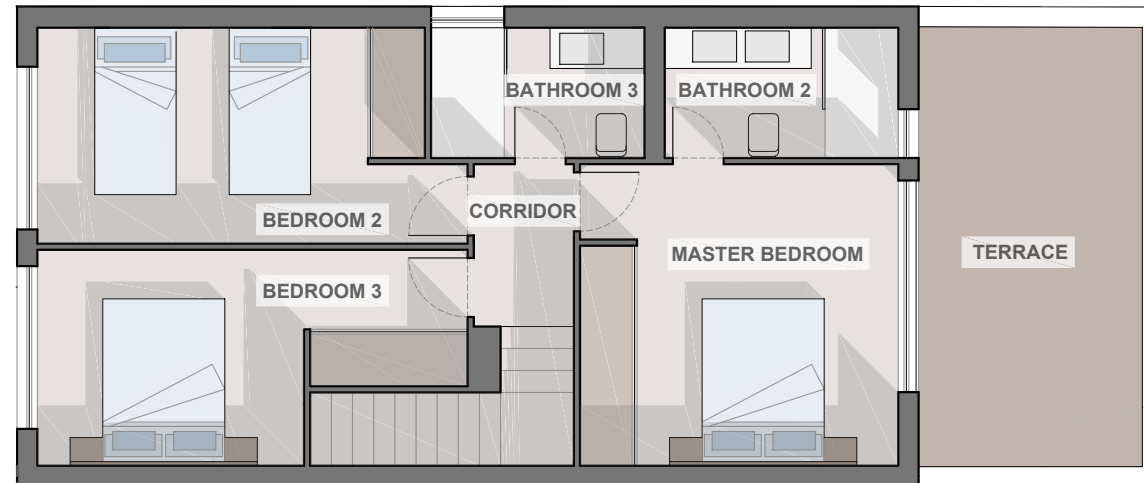
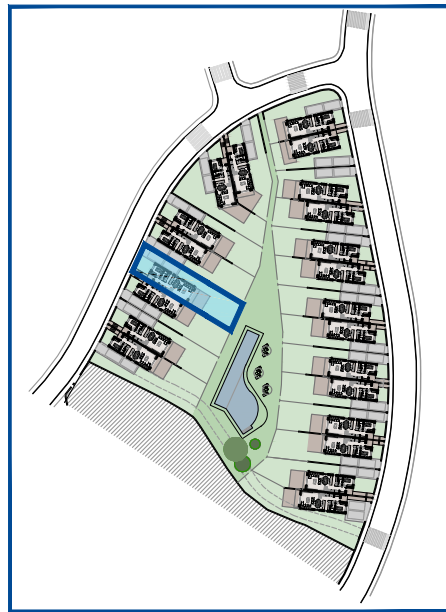




OASIS 22

by MAREIN



SEMI DETACHED 19

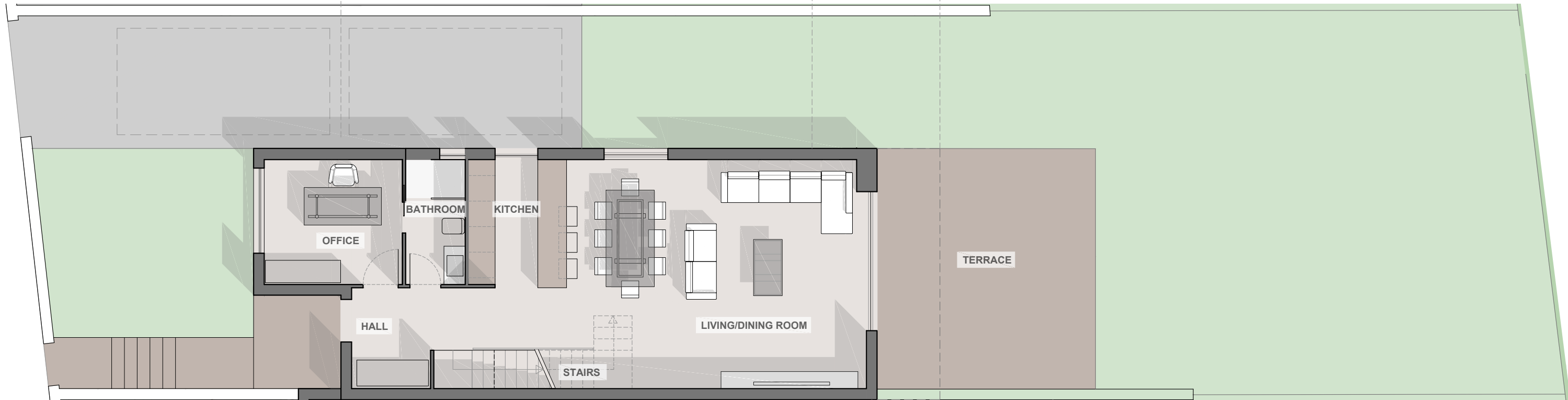
PLOT 320,94m²

GROUND FLOOR

HALL	4,45m ²
LIVING/DINING ROOM	41,85m ²
KITCHEN	6,95m ²
OFFICE	9,60m ²
BATHROOM	4,15m ²
STAIRS	4,90m ²
USEFULL SURFACE	71,90m²
BUILT SURFACE	79,95m²
TERRACE	29,00m ²

FIRST FLOOR

CORRIDOR	2,55m ²
MASTER BEDROOM	14,50m ²
BEDROOM 2	13,10m ²
BEDROOM 3	12,05m ²
BATHROOM 2	4,60m ²
BATHROOM 3	4,20m ²
USEFULL SURFACE	51,00m²
BUILT SURFACE	81,90m²
TERRACE	15,00m ²



NOTA: Estos planos son orientativos, pudiendo sufrir modificaciones durante el desarrollo del proyecto, a juicio de la dirección técnica y de los organismos competentes. El mobiliario es figurativo no vinculante.

NOTE: These plans are for guidance only, and may change during the project, according to the technical management. Figurative furniture is not binding.

