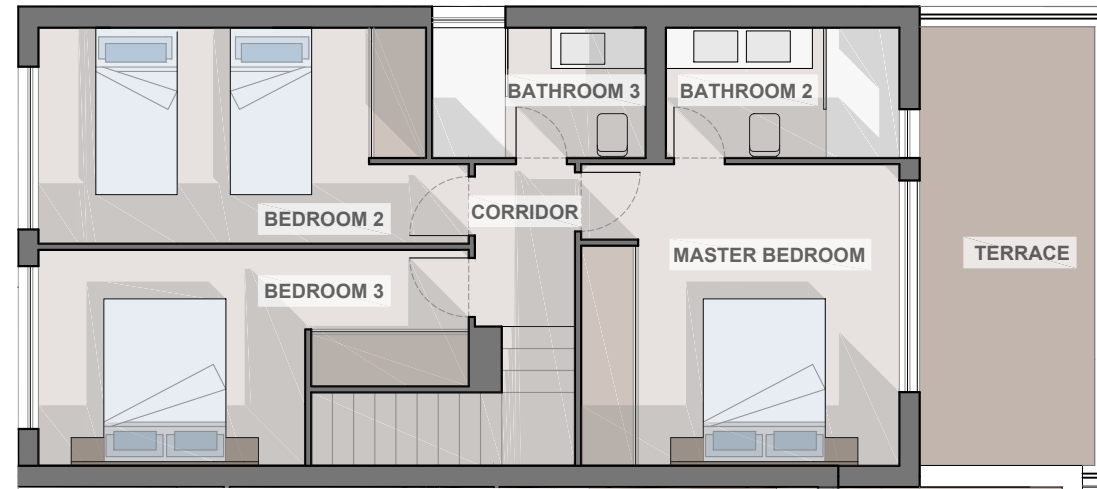
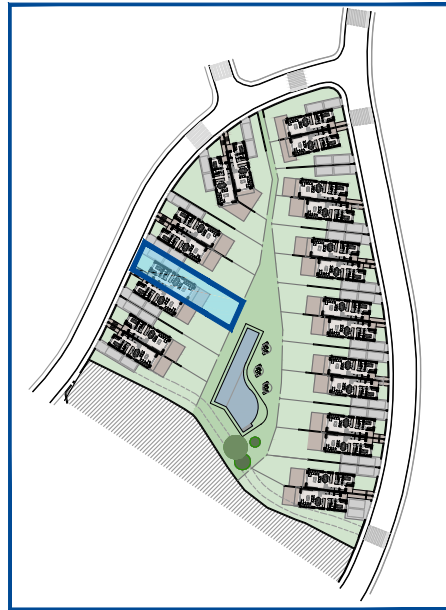




# OASIS 22

by MAREIN



**FIRST FLOOR**

## SEMI DETACHED 21

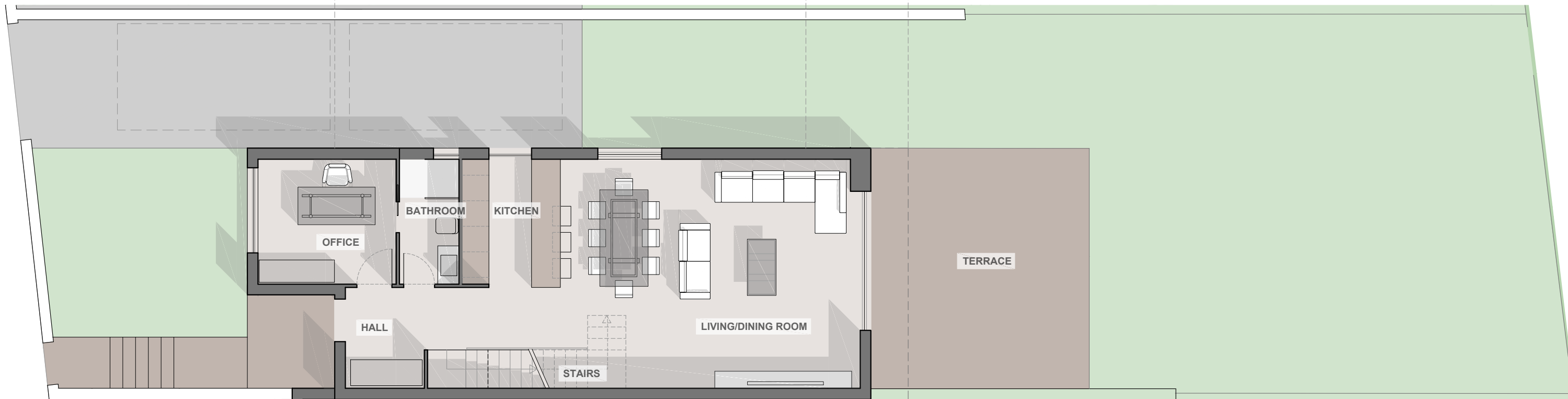
## PLOT 317,99m<sup>2</sup>

### GROUND FLOOR

HALL	4,45m <sup>2</sup>
LIVING/DINING ROOM	41,85m <sup>2</sup>
KITCHEN	6,95m <sup>2</sup>
OFFICE	9,60m <sup>2</sup>
BATHROOM	4,15m <sup>2</sup>
STAIRS	4,90m <sup>2</sup>
<b>USEFULL SURFACE</b>	<b>71,90m<sup>2</sup></b>
<b>BUILT SURFACE</b>	<b>79,95m<sup>2</sup></b>
TERRACE	29,00m <sup>2</sup>

### FIRST FLOOR

CORRIDOR	2,55m <sup>2</sup>
MASTER BEDROOM	14,50m <sup>2</sup>
BEDROOM 2	13,10m <sup>2</sup>
BEDROOM 3	12,05m <sup>2</sup>
BATHROOM 2	4,60m <sup>2</sup>
BATHROOM 3	4,20m <sup>2</sup>
<b>USEFULL SURFACE</b>	<b>51,00m<sup>2</sup></b>
<b>BUILT SURFACE</b>	<b>78,20m<sup>2</sup></b>
TERRACE	11,60m <sup>2</sup>



**GROUND FLOOR**

NOTA: Estos planos son orientativos, pudiendo sufrir modificaciones durante el desarrollo del proyecto, a juicio de la dirección técnica y de los organismos competentes. El mobiliario es figurativo no vinculante.

NOTE: These plans are for guidance only, and may change during the project, according to the technical management. Figurative furniture is not binding.

