

the view

FUENGIROLA

PARCELA UE 8.2-8.3
"SOLVILLA", FUENGIROLA. MÁLAGA

UNIT NUMBER: 1
APARTMENT TYPE: 3 BED/ 2 BATH

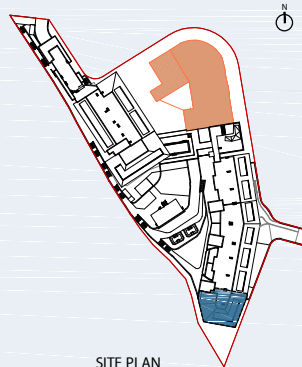
PORTAL 1
FLOOR: GROUND FLOOR (+32,55)
DOOR: A

BUILT SURFACE AREA

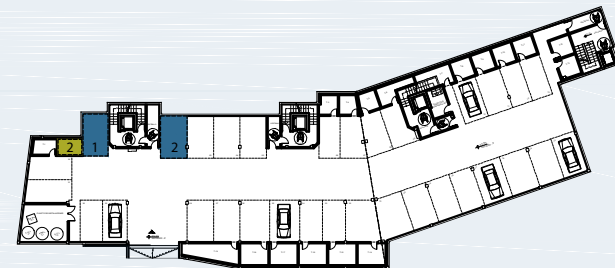
BUILT INTERIOR:	106,49 m ²
COVERED TERRACE:	53,03 m ²
OPEN TERRACE:	27,19 m ²
TOTAL BUILT:	186,71 m ²

SURFACES ACCORDING TO R.D. 515/1989

USEFUL AREA:	117,14 m ²
GROSS AREA:	175,01 m ²



SITE PLAN



GARAGE AND STORAGE LOCATION
(LEVEL +25,95M)

- STORE ROOM Nº 2
- PARKING PLACE Nº 1 AND Nº 2

(*) "The areas are approximate and could vary for technical reasons, during the execution of works"
(**) "Gross and useful areas include 100% covered terrace"

