

the view

FUENGIROLA

PARCELA UE 8.2-8.3
"SOLVILLA", FUENGIROLA. MÁLAGA

UNIT NUMBER: 17
APARTMENT TYPE: 3 BED/ 2 BATH

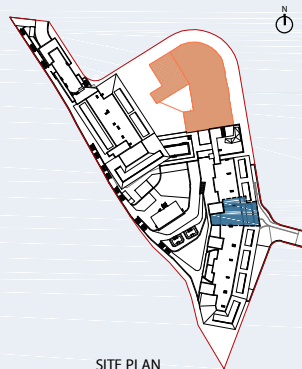
PORTAL 3
FLOOR: GROUND FLOOR (+32,55)
DOOR: A

BUILT SURFACE AREA

BUILT INTERIOR:	110,46 m ²
COVERED TERRACE:	32,54 m ²
OPEN TERRACE:	19,63 m ²
TOTAL BUILT:	162,63 m ²

SURFACES ACCORDING TO R.D. 515/1989

USEFUL AREA:	121,51 m ²
GROSS AREA:	176,41 m ²



- STORE ROOM N° 24
- PARKING PLACE N° 37 AND N° 40

(*) "The areas are approximate and could vary for technical reasons, during the execution of works"
(**) "Gross and useful areas include 100% covered terrace"