

# the view

FUENGIROLA

PARCELA UE 8.2-8.3  
"SOLVILLA", FUENGIROLA. MÁLAGA

UNIT NUMBER: 19  
APARTMENT TYPE: 3 BED/ 2 BATH

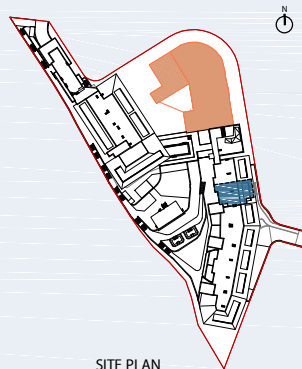
PORTAL 3  
FLOOR: FIRST FLOOR (+35,85)  
DOOR: B

### BUILT SURFACE AREA

BUILT INTERIOR:	106,13 m <sup>2</sup>
COVERED TERRACE:	25,01 m <sup>2</sup>
OPEN TERRACE:	0,00 m <sup>2</sup>
TOTAL BUILT:	131,14 m <sup>2</sup>

### SURFACES ACCORDING TO R.D. 515/1989

USEFUL AREA:	116,74 m <sup>2</sup>
GROSS AREA:	168,08 m <sup>2</sup>



SITE PLAN



GARAGE AND STORAGE LOCATION  
(LEVEL +29,25M)

- STORE ROOM Nº 31
- PARKING PLACE Nº 53 AND Nº 54

(\*) "The areas are approximate and could vary for technical reasons, during the execution of works"  
(\*\*)"Gross and useful areas include 100% covered terrace"

