

the view

FUENGIROLA

PARCELA UE 8.2-8.3
"SOLVILLA", FUENGIROLA. MÁLAGA

UNIT NUMBER: 20
APARTMENT TYPE: 2 BED/ 2 BATH

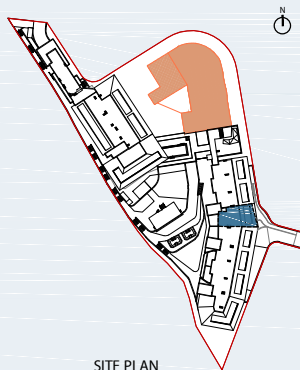
PORTAL 3
FLOOR: SECOND FLOOR (+39,15)
DOOR: A

BUILT SURFACE AREA

BUILT INTERIOR:	87,28 m ²
COVERED TERRACE:	32,41 m ²
OPEN TERRACE:	0,00 m ²
TOTAL BUILT:	119,69 m ²

SURFACES ACCORDING TO R.D. 515/1989

USEFUL AREA:	96,01 m ²
GROSS AREA:	138,81 m ²



SITE PLAN



GARAGE AND STORAGE LOCATION
(LEVEL +29,25M)

- STORE ROOM Nº 30
- PARKING PLACE Nº 42 AND Nº 52

(*) "The areas are approximate and could vary for technical reasons, during the execution of works"
(**) "Gross and useful areas include 100% covered terrace"

