

# the view

FUENGIROLA

PARCELA UE 8.2-8.3  
"SOLVILLA", FUENGIROLA. MÁLAGA

UNIT NUMBER: 23  
APARTMENT TYPE: 3 BED/ 2 BATH

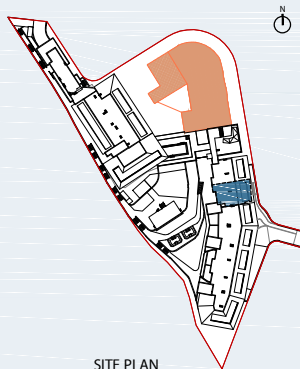
PORTAL 3  
FLOOR: THIRD FLOOR (+42,45)  
DOOR: B

### BUILT SURFACE AREA

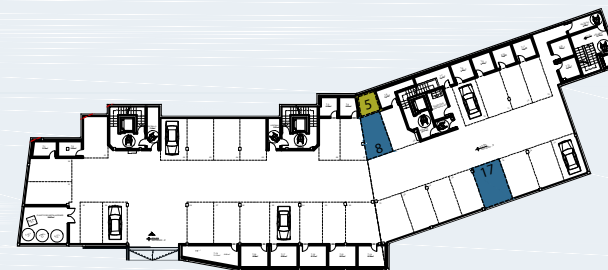
BUILT INTERIOR:	106,49 m <sup>2</sup>
COVERED TERRACE:	30,27 m <sup>2</sup>
OPEN TERRACE:	0,00 m <sup>2</sup>
TOTAL BUILT:	136,76 m <sup>2</sup>

### SURFACES ACCORDING TO R.D. 515/1989

USEFUL AREA:	117,14 m <sup>2</sup>
GROSS AREA:	168,48 m <sup>2</sup>



SITE PLAN



GARAGE AND STORAGE LOCATION  
(LEVEL +25,95M)

- STORE ROOM Nº 5
- PARKING PLACE Nº 8 AND Nº 17

(\*) "The areas are approximate and could vary for technical reasons, during the execution of works"  
(\*\*)"Gross and useful areas include 100% covered terrace"

