

the view

FUENGIROLA

PARCELA UE 8.2-8.3
"SOLVILLA", FUENGIROLA. MÁLAGA

UNIT NUMBER: 24
APARTMENT TYPE: 3 BED/ 2 BATH

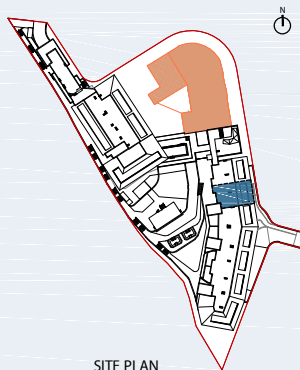
PORTAL 3
FLOOR: FOURTH FLOOR (+45,75)
DOOR: A

BUILT SURFACE AREA

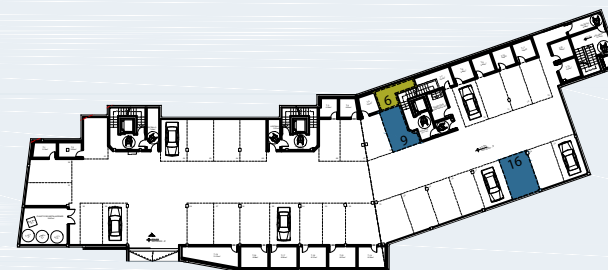
BUILT INTERIOR:	97,34 m ²
COVERED TERRACE:	0,00 m ²
OPEN TERRACE:	22,19 m ²
TOTAL BUILT:	119,53 m ²

SURFACES ACCORDING TO R.D. 515/1989

USEFUL AREA:	107,07 m ²
GROSS AREA:	153,69 m ²



SITE PLAN



GARAGE AND STORAGE LOCATION
(LEVEL +25,95M)

- STORE ROOM N° 6
- PARKING PLACE N° 9 AND N° 16

(*) "The areas are approximate and could vary for technical reasons, during the execution of works"
(**) "Gross and useful areas include 100% covered terrace"

