

the view

FUENGIROLA

PARCELA UE 8.2-8.3
"SOLVILLA", FUENGIROLA. MÁLAGA

UNIT NUMBER: 25
APARTMENT TYPE: 1 BED/ 1 BATH

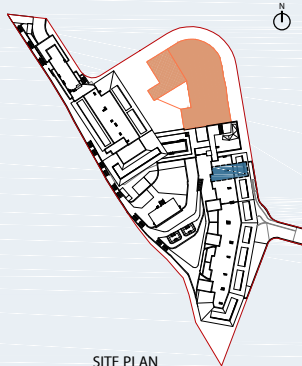
PORTAL 4
FLOOR: GROUND FLOOR (+32,55)
DOOR: A

BUILT SURFACE AREA

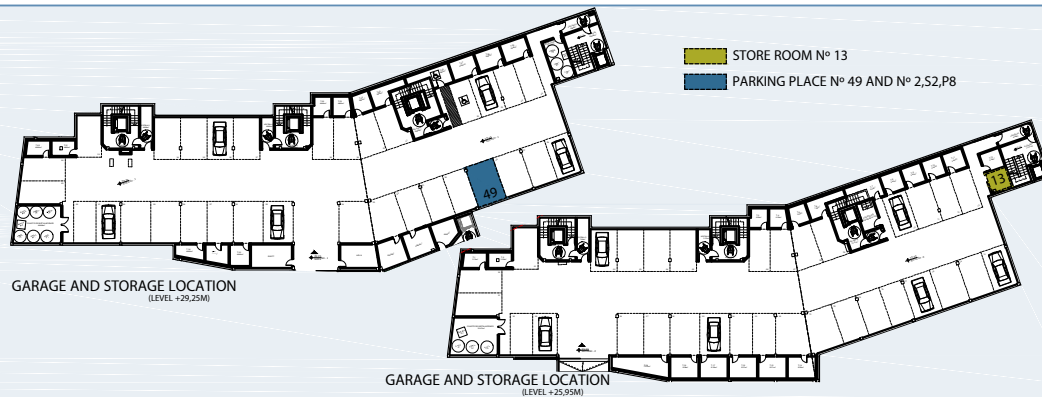
BUILT INTERIOR:	67,78 m ²
COVERED TERRACE:	19,43 m ²
OPEN TERRACE:	0,00 m ²
TOTAL BUILT:	87,21 m ²

SURFACES ACCORDING TO R.D. 515/1989

USEFUL AREA:	74,56 m ²
GROSS AREA:	108,11 m ²



SITE PLAN



(*) "The areas are approximate and could vary for technical reasons, during the execution of works"
(**) "Gross and useful areas include 100% covered terrace"