

# the view

FUENGIROLA

PARCELA UE 8.2-8.3  
"SOLVILLA", FUENGIROLA. MÁLAGA

UNIT NUMBER: 26  
APARTMENT TYPE: 3 BED/ 2 BATH

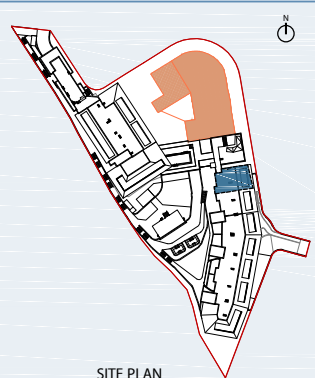
PORTAL 4  
FLOOR: FIRST FLOOR (+39,15)  
DOOR: A

### BUILT SURFACE AREA

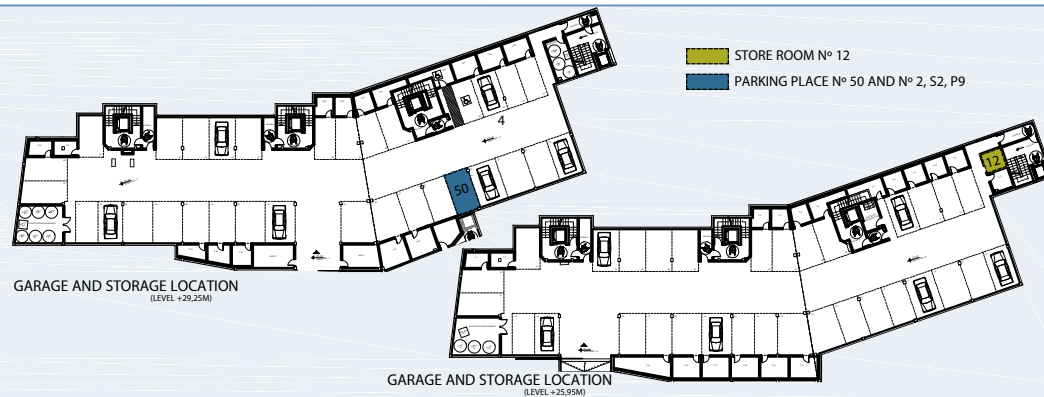
BUILT INTERIOR:	106,33 m <sup>2</sup>
COVERED TERRACE:	31,49 m <sup>2</sup>
OPEN TERRACE:	0,00 m <sup>2</sup>
TOTAL BUILT:	137,82 m <sup>2</sup>

### SURFACES ACCORDING TO R.D. 515/1989

USEFUL AREA:	116,96 m <sup>2</sup>
GROSS AREA:	169,10 m <sup>2</sup>



SITE PLAN



GARAGE AND STORAGE LOCATION  
(LEVEL +29,25M)

GARAGE AND STORAGE LOCATION  
(LEVEL +25,95M)

(\*) "The areas are approximate and could vary for technical reasons, during the execution of works"  
(\*\*) "Gross and useful areas include 100% covered terrace"

