

## the view

FUENGIROLA

PARCELA UE 8.2-8.3  
"SOLVILLA", FUENGIROLA. MÁLAGA

UNIT NUMBER: 28  
APARTMENT TYPE: 3 BED/ 2 BATH

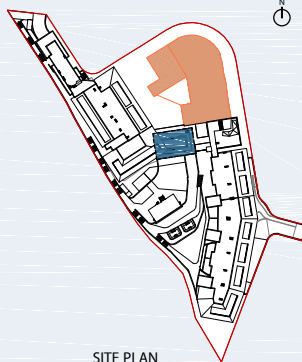
PORTAL 4  
FLOOR: FIRST FLOOR (+39,15)  
DOOR: C

### BUILT SURFACE AREA

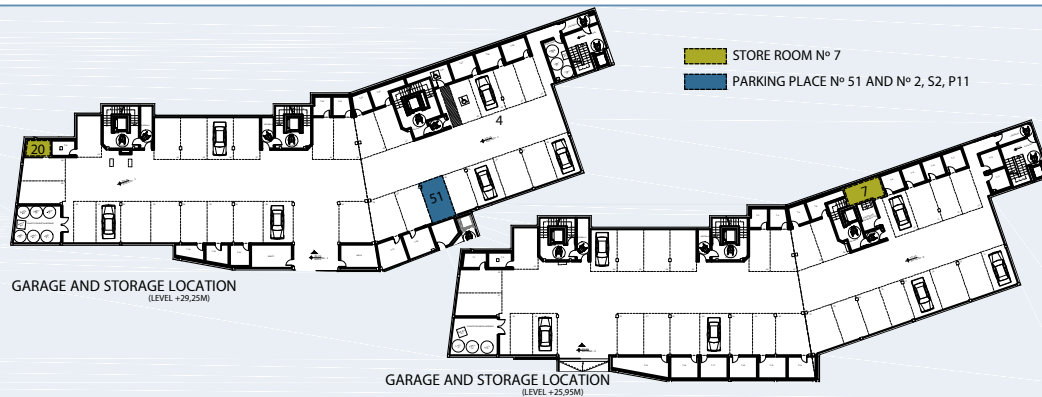
BUILT INTERIOR:	115,78 m <sup>2</sup>
COVERED TERRACE:	55,49 m <sup>2</sup>
OPEN TERRACE:	0,00 m <sup>2</sup>
TOTAL BUILT:	171,27 m <sup>2</sup>

### SURFACES ACCORDING TO R.D. 515/1989

USEFUL AREA:	127,36 m <sup>2</sup>
GROSS AREA:	186,80 m <sup>2</sup>



SITE PLAN



(\*) "The areas are approximate and could vary for technical reasons, during the execution of works"  
(\*\*) "Gross and useful areas include 100% covered terrace"

