

the view

FUENGIROLA

PARCELA UE 8.2-8.3
"SOLVILLA", FUENGIROLA. MÁLAGA

UNIT NUMBER: 31
APARTMENT TYPE: 3 BED/ 2 BATH

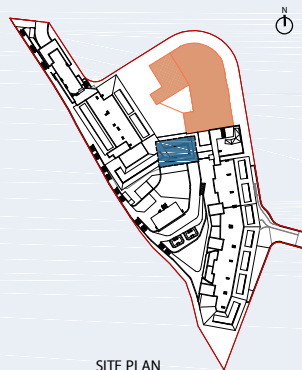
PORTAL 4
FLOOR: SECOND FLOOR (+42,45)
DOOR: C

BUILT SURFACE AREA

BUILT INTERIOR:	115,78 m ²
COVERED TERRACE:	55,49 m ²
OPEN TERRACE:	0,00 m ²
TOTAL BUILT:	171,27 m ²

SURFACES ACCORDING TO R.D. 515/1989

USEFUL AREA:	127,36 m ²
GROSS AREA:	186,50 m ²



SITE PLAN



GARAGE AND STORAGE LOCATION
(LEVEL +29,25M)

- STORE ROOM Nº 28
- PARKING PLACE Nº 44 AND Nº 47

(*) "The areas are approximate and could vary for technical reasons, during the execution of works"
(**)"Gross and useful areas include 100% covered terrace"

