

# the view

FUENGIROLA

PARCELA UE 8.2-8.3  
"SOLVILLA", FUENGIROLA. MÁLAGA

UNIT NUMBER: 32  
APARTMENT TYPE: 3 BED/ 2 BATH

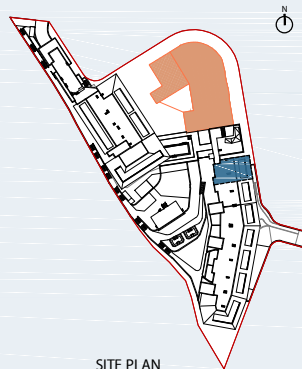
PORTAL 4  
FLOOR: FOURTH FLOOR (+45,75)  
DOOR: A

### BUILT SURFACE AREA

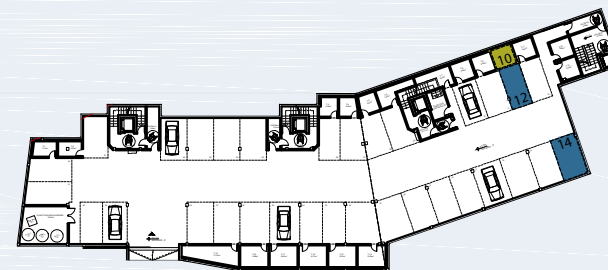
BUILT INTERIOR:	97,53 m <sup>2</sup>
COVERED TERRACE:	0,00 m <sup>2</sup>
OPEN TERRACE:	22,19 m <sup>2</sup>
TOTAL BUILT:	119,72 m <sup>2</sup>

### SURFACES ACCORDING TO R.D. 515/1989

USEFUL AREA:	107,28 m <sup>2</sup>
GROSS AREA:	153,99 m <sup>2</sup>



SITE PLAN



GARAGE AND STORAGE LOCATION  
(LEVEL +25,95M)

- STORE ROOM N° 10
- PARKING PLACE N° 12 AND N° 14

(\*) "The areas are approximate and could vary for technical reasons, during the execution of works"  
(\*\*) "Gross and useful areas include 100% covered terrace"

