

the view

FUENGIROLA

PARCELA UE 8.2-8.3
"SOLVILLA", FUENGIROLA. MÁLAGA

UNIT NUMBER: 33
APARTMENT TYPE: 2 BED/ 2 BATH

PORTAL 4
FLOOR: THIRD FLOOR (+45,75)
DOOR: B

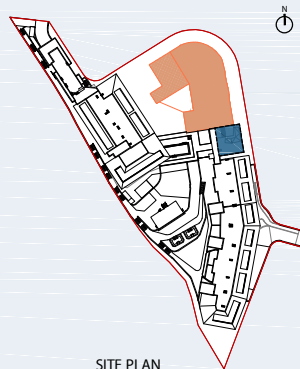
BUILT SURFACE AREA

BUILT INTERIOR:	87,24 m ²
COVERED TERRACE:	27,92 m ²
OPEN TERRACE:	0,00 m ²
TOTAL BUILT:	115,16 m ²

SURFACES ACCORDING TO R.D. 515/1989

USEFUL AREA:	95,96 m ²
GROSS AREA:	140,22 m ²

(*) "The areas are approximate and could vary for technical reasons, during the execution of works"
(**) "Gross and useful areas include 100% covered terrace"



SITE PLAN



GARAGE AND STORAGE LOCATION
(LEVEL +29,25M)

- STORE ROOM N° 29
- PARKING PLACE N° 45 AND N° 46

