

the view

FUENGIROLA

PARCELA UE 8.2-8.3
"SOLVILLA", FUENGIROLA. MÁLAGA

UNIT NUMBER: 5
APARTMENT TYPE: 3 BED/ 2 BATH

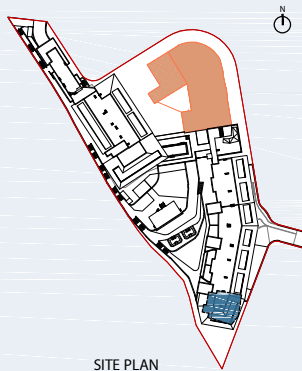
PORTAL 1
FLOOR: SECOND FLOOR (+39,15)
DOOR: A

BUILT SURFACE AREA

BUILT INTERIOR:	106,49 m ²
COVERED TERRACE:	50,02 m ²
OPEN TERRACE:	0,00 m ²
TOTAL BUILT:	156,51 m ²

SURFACES ACCORDING TO R.D. 515/1989

USEFUL AREA:	117,14 m ²
GROSS AREA:	172,66 m ²



SITE PLAN



GARAGE AND STORAGE LOCATION
(LEVEL +29,25M)

- STORE ROOM N° 21
- PARKING PLACE N° 33 AND N° 34

(*) "The areas are approximate and could vary for technical reasons, during the execution of works"
(**) "Gross and useful areas include 100% covered terrace"

