

# the view

FUENGIROLA

PARCELA UE 8.2-8.3  
"SOLVILLA", FUENGIROLA. MÁLAGA

UNIT NUMBER: 6  
APARTMENT TYPE: 2 BED/ 2 BATH

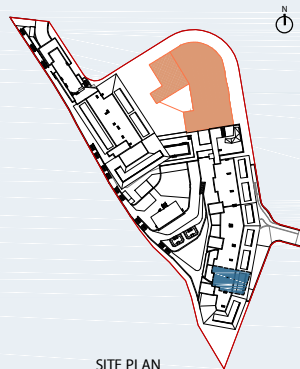
PORTAL 1  
FLOOR: SECOND FLOOR (+39,15)  
DOOR: B

### BUILT SURFACE AREA

BUILT INTERIOR:	106,55 m <sup>2</sup>
COVERED TERRACE:	29,36 m <sup>2</sup>
OPEN TERRACE:	0,00 m <sup>2</sup>
TOTAL BUILT:	135,91 m <sup>2</sup>

### SURFACES ACCORDING TO R.D. 515/1989

USEFUL AREA:	117,21 m <sup>2</sup>
GROSS AREA:	168,88 m <sup>2</sup>



SITE PLAN



GARAGE AND STORAGE LOCATION  
(LEVEL +29,25M)

- STORE ROOM Nº 20
- PARKING PLACE Nº 63 AND Nº 64

(\*) "The areas are approximate and could suffer variations due to technical systems and the execution of the work"  
(\*\*) "Gross and useful areas include 100% covered terrace"

