

# the view

FUENGIROLA

PARCELA UE 8.2-8.3  
"SOLVILLA", FUENGIROLA. MÁLAGA

UNIT NUMBER: 7  
APARTMENT TYPE: 2 BED/ 2 BATH

PORTAL 1  
FLOOR: THIRD FLOOR (+42,45)  
DOOR: A

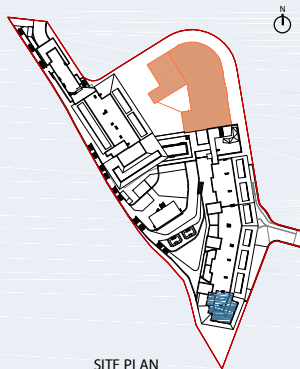
### BUILT SURFACE AREA

BUILT INTERIOR:	83,07 m <sup>2</sup>
COVERED TERRACE:	0,00 m <sup>2</sup>
OPEN TERRACE:	43,91 m <sup>2</sup>
TOTAL BUILT:	126,98 m <sup>2</sup>

### SURFACES ACCORDING TO R.D. 515/1989

USEFUL AREA:	91,38 m <sup>2</sup>
GROSS AREA:	134,04 m <sup>2</sup>

(\*) "The areas are approximate and could vary for technical reasons, during the execution of works"  
(\*\*) "Gross and useful areas include 100% covered terrace"



SITE PLAN



GARAGE AND STORAGE LOCATION  
(LEVEL +29,25M)

- STORE ROOM Nº 34
- PARKING PLACE Nº 58 AND Nº 59

