

# the view

FUENGIROLA

PARCELA UE 8.2-8.3  
"SOLVILLA", FUENGIROLA. MÁLAGA

UNIT NUMBER: 9  
APARTMENT TYPE: 3 BED/ 2 BATH

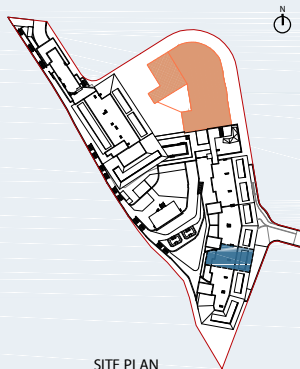
PORTAL 2  
FLOOR: GROUND FLOOR (+32,55)  
DOOR: A

### BUILT SURFACE AREA

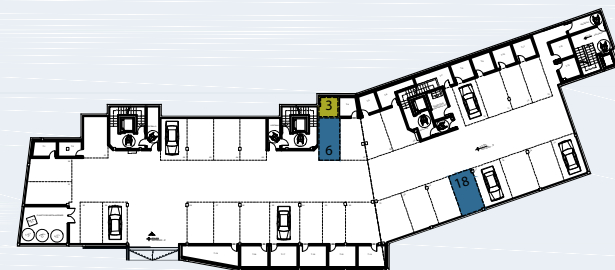
BUILT INTERIOR:	106,55 m <sup>2</sup>
COVERED TERRACE:	31,78 m <sup>2</sup>
OPEN TERRACE:	18,71 m <sup>2</sup>
TOTAL BUILT:	157,04 m <sup>2</sup>

### SURFACES ACCORDING TO R.D. 515/1989

USEFUL AREA:	117,21 m <sup>2</sup>
GROSS AREA:	170,65 m <sup>2</sup>



SITE PLAN



GARAGE AND STORAGE LOCATION  
(LEVEL +25,95M)

- STORE ROOM N° 3
- PARKING PLACE N° 6 AND N° 18

(\*) "The areas are approximate and could vary for technical reasons, during the execution of works"  
(\*\*) "Gross and useful areas include 100% covered terrace"

