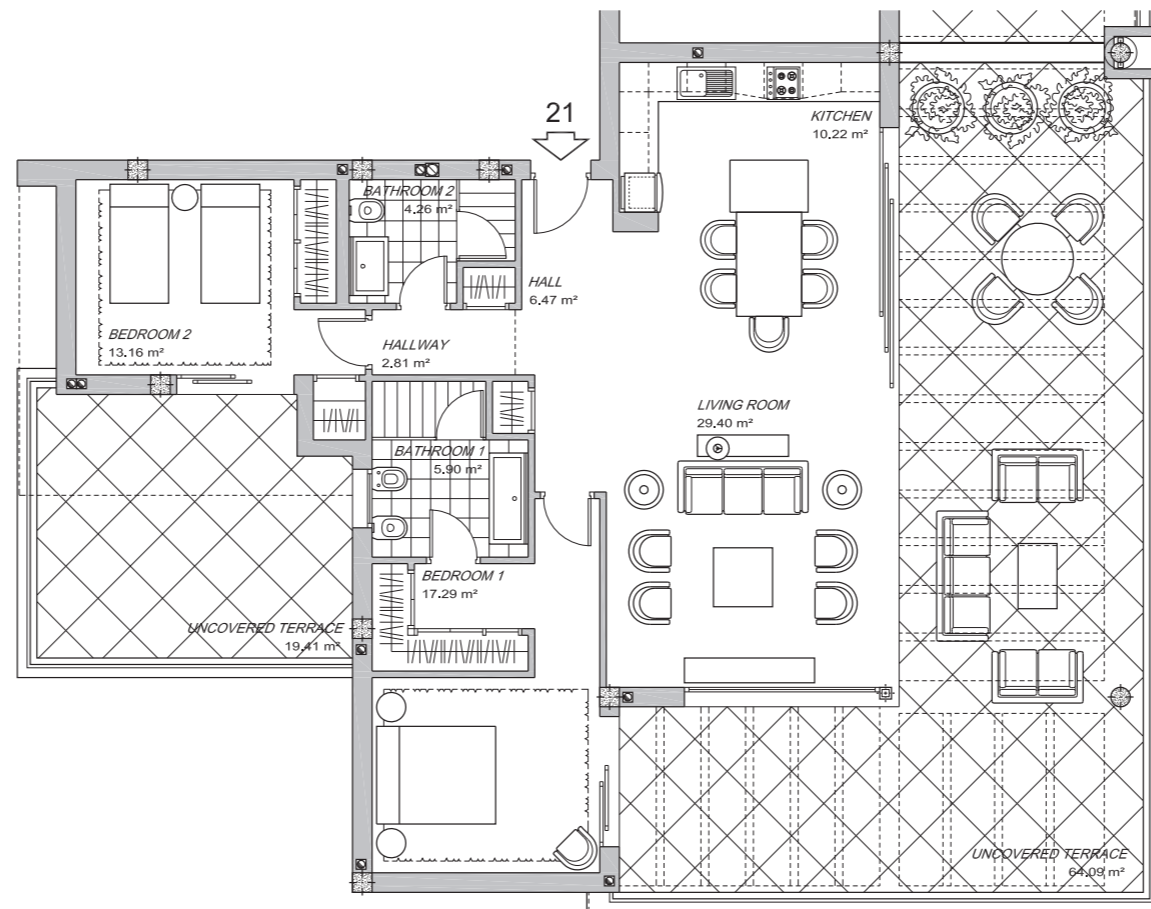


# Floor-plan

THE RESIDENCES

## B3-21

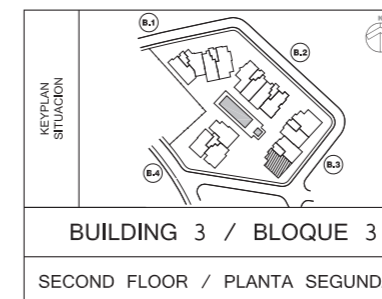
The Residences  
MARBELLA - ESTEPONA



USEFUL AREAS / SUPERFICIES UTILES	
HALL / HALL	6.47
LIVING DINING ROOM / SALON COMEDOR	29.40
KITCHEN / COCINA	10.22
UNCOVERED TERRACE / TERRAZA DESCUB. 1	64.09
UNCOVERED TERRACE / TERRAZA DESCUB. 2	19.41
HALLWAY / PASO	2.81
BATHROOM 1 / BAÑO 1	5.90
BATHROOM 2 / BAÑO 2	4.26
BEDROOM 1 / DORMITORIO 1	17.29
BEDROOM 2 / DORMITORIO 2	13.16
TOTAL	173.01



CONSTRUCTED AREAS/ SUPERFICIES CONSTRUIDAS			
	ENCLOSED/ COVERED AREA SUPERFICIE CERRADA	COVERED TERRACE TERRAZA CUBIERTA	UNCOVERED TERRACE TERRAZA DESCUBIERTA
APARTMENT 21	106.03		88.85
R.D. 2018/2005	106.03 <sup>(1)</sup>		8.94 <sup>(2)</sup>



(1) Superficie construida cerrada de la vivienda. / Fully enclosed covered area.

(2) Según el DECRETO 218/2005 de la Junta de Andalucía, se computa como superficie útil de los espacios exteriores de uso privativo el 50% de la superficie real de su suelo, hasta un máximo del 10% de la superficie útil cerrada de la vivienda correspondiente./ In compliance with the DECREE of the Junta de Andalucía 218/2005, the useful surface of exterior floor spaces which are for the private use of the dwellings means 50% of the actual surface to a maximum of 10% the useful enclosed surface.

Lago Nes Inmobiliaria, S.L., Sociedad Unipersonal Inscrita en el Registro Mercantil de Madrid, Tomo 21.025, Libro 0, Folio 129, Sección 8, Hoja M-372993. CIF: B-85122257. Oficina Principal. C/Fragua, 12, Oficina 102, 28933 Móstoles (Madrid). Tlf. +34 917 40 00 00.  
Szygy Homes, S.L., Sociedad Unipersonal, Inscrita en el Registro Mercantil de Madrid, Tomo 34.461, Folio 101, Sección 8, Hoja M-619793. CIF: B-87476875. Oficina Principal. C/Fragua, 12, Oficina 109, 28933 Móstoles (Madrid). Tlf. +34 917 40 00 00.

Information, computer graphics and graphic documentation that appear in this brochure are indicative, finishes may include extras not included and are subject to changes arising from final project and its construction. All the furniture is merely decorative. The other information referred to in R. D. 218/2005 of the Government of Andalusia, is available in our offices for consultation.

### PAYMENT STRUCTURE

Price: \_\_\_\_\_

