

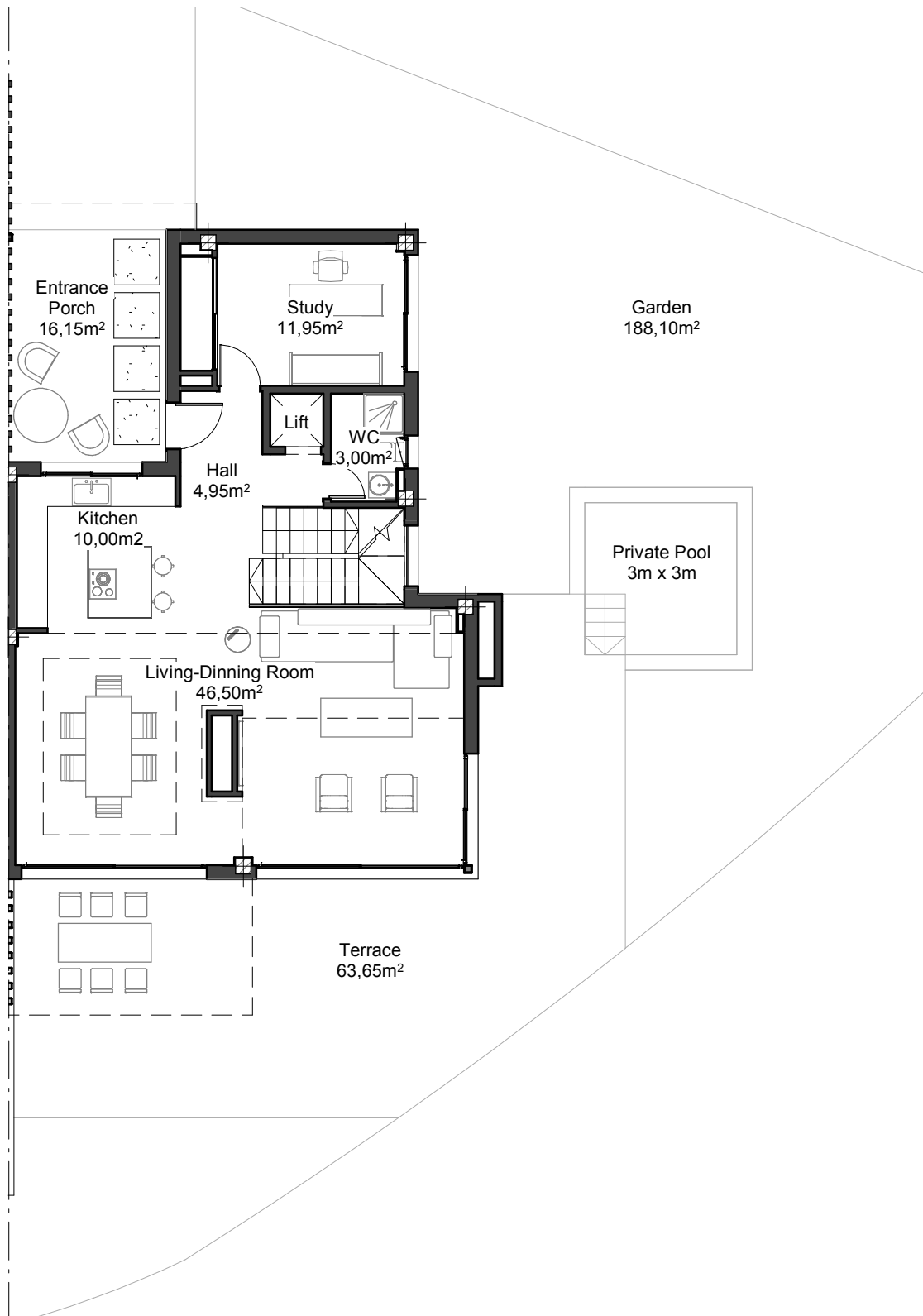


# Villa 06

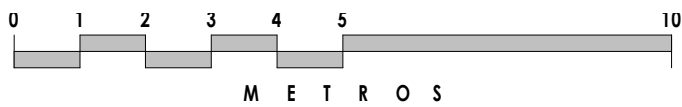
## Details

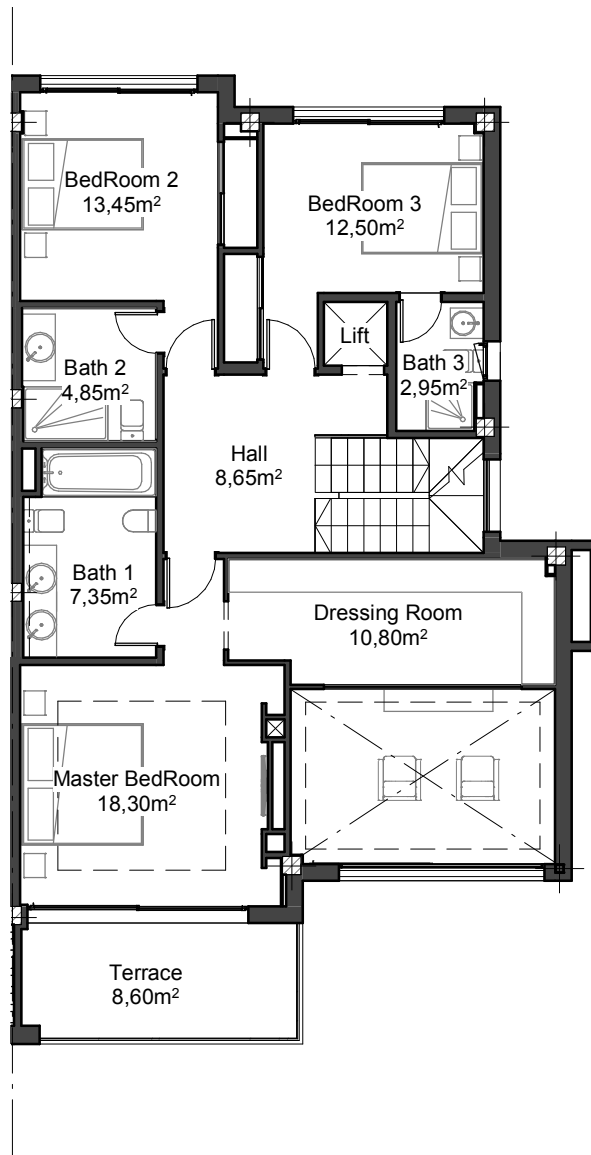
Beds	4
Baths	5

Size	Built	Terraces	Garden
Lower Ground	64.10 m <sup>2</sup>	- m <sup>2</sup>	- m <sup>2</sup>
Ground Floor	95.65 m <sup>2</sup>	80.80 m <sup>2</sup>	169.30 m <sup>2</sup>
First Floor	102.85 m <sup>2</sup>	9.60 m <sup>2</sup>	- m <sup>2</sup>
Roof Solarium	11.45 m <sup>2</sup>	104.10 m <sup>2</sup>	- m <sup>2</sup>
<b>TOTAL</b>	<b>274.05 m<sup>2</sup></b>	<b>194.50 m<sup>2</sup></b>	<b>169.30 m<sup>2</sup></b>

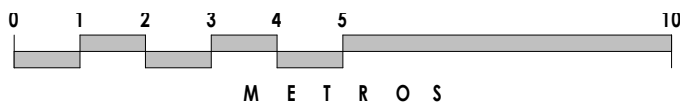


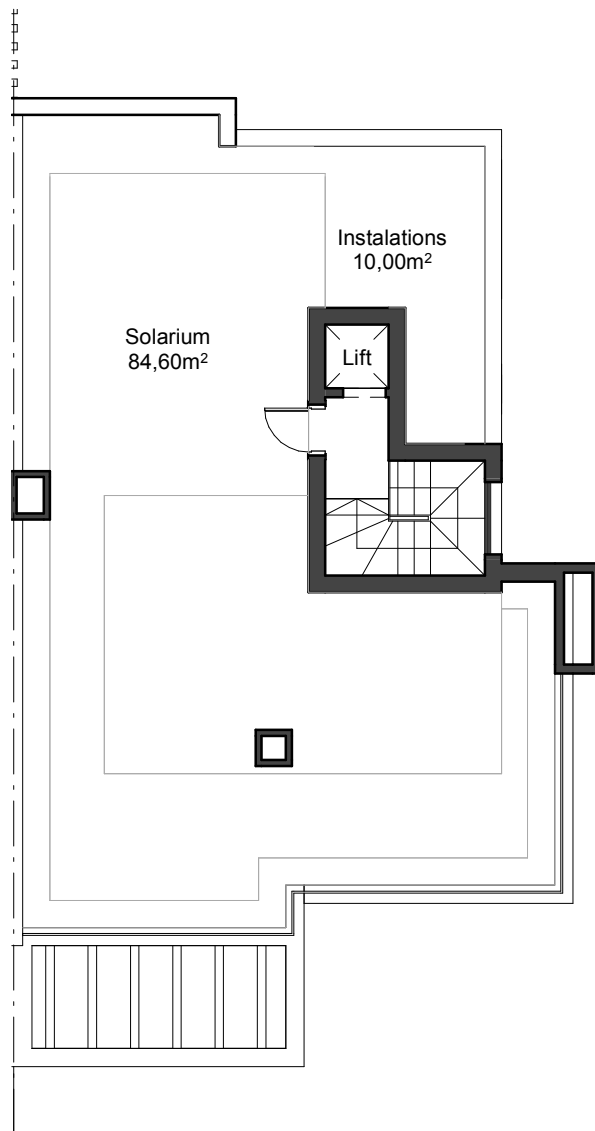
# Ground Floor



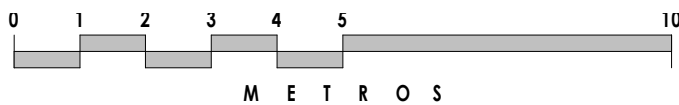


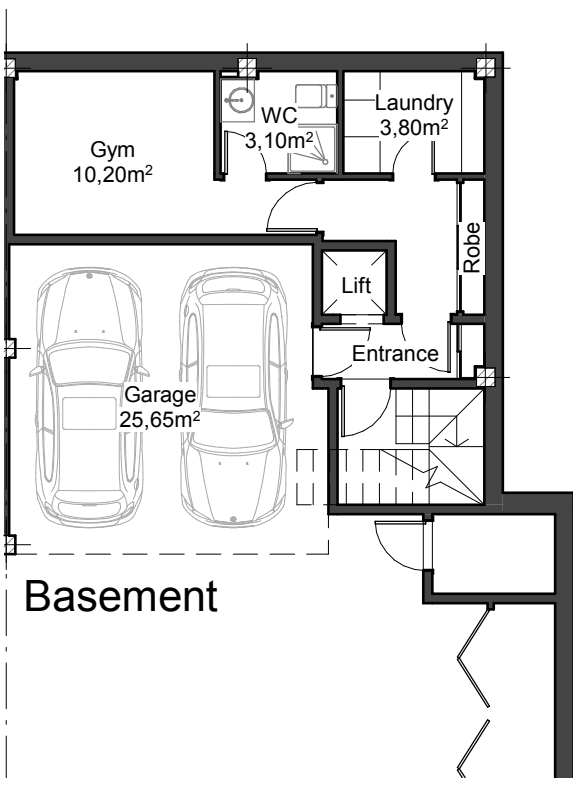
# First Floor





# Roof Solarium





# Basement Level

